

FIDO 2 Hardware Token

User Guide

Content

1. Introduction	3
2. Hardware Token Setup	3
3. Activating the Token	7
4. Authentication in Internet Banking using a hardware token	11
5. Authorizing a payment with Hardware Token	13
6. Hardware Token configuration menu overview	16

1. Introduction

The token with FIDO2 technology provides a superior level of security, eliminating the risks associated with traditional passwords. Authentication is performed using advanced cryptography-based methods, which means your data remains protected even against phishing attempts or cyberattacks. Simple, fast, and extremely secure – you have full control over your digital access. The physical token is your reliable solution for fast and secure access to Internet Banking operations. Here are some of its advantages:

- You have full control over every operation: the device clearly displays the steps of the transaction, so you confirm exactly what you see.
- You benefit from a high level of security when accessing Vista Internet Banking, without sacrificing ease of use.
- Authentication and payment approvals are done quickly, using a single PIN code chosen by you.
- The activation process is simple and intuitive, carried out directly in the browser, without complicated steps.

2. Hardware Token Setup

To begin, connect the hardware token to your computer using the USB cable. Once connected, the messages shown in *Figure 1* and *Figure 2* will appear sequentially on the token's screen. At this point, you will need to select the communication language.:



Figure 1



Figure 2

NOTE: *The available number buttons (0-9) will be used to make the selection.*

Configure a 4-digit PIN code *Figures 3* and *Figures 4*, then confirm the PIN *Figures 5* and *Figures 6*.



Figure 3



Figure 4



Figure 5



Figure 6

After completing the PIN confirmation step *Figure 6*, the token is configured and ready for use *Figure 7*.



Figure 7

3. Activating the Token

On the login page, enter your access credentials and press the “Continue” button *Figure 8*.

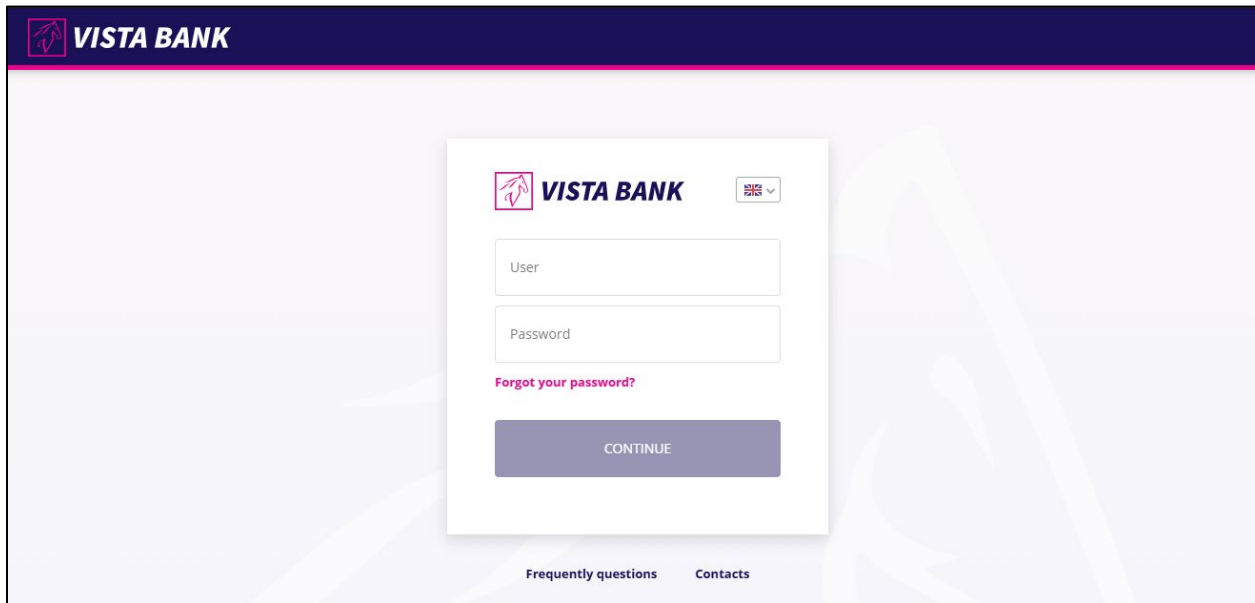


Figure 8

On the next screen, a message will appear requesting you to activate the new token. To proceed, check the option “I agree to the Terms and Conditions,” then click the “Activate” button *Figure 9*.

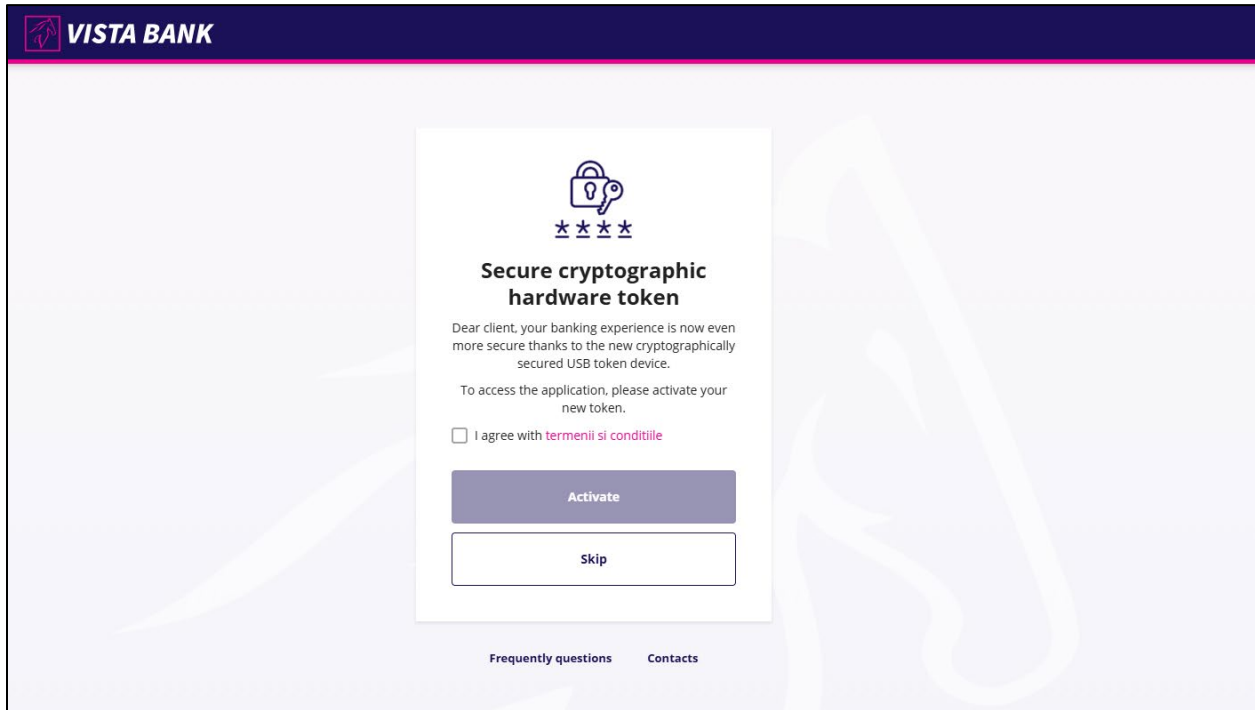


Figure 9

A pop-up *Figure 10* will appear on the screen, confirming the token's connection to Internet Banking. To continue, press the "OK" button *Figures 11* and *Figure 12*, then enter your PIN code *Figure 14*. After confirmation, the message shown in *Figure 15* will be displayed automatically.

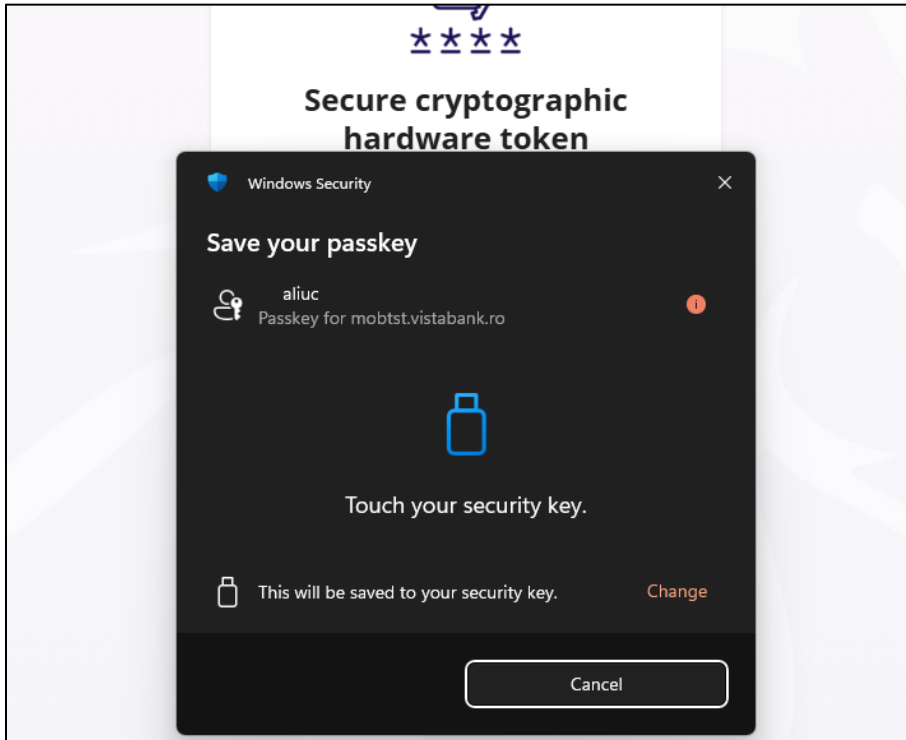


Figure 10



Figure 11



Figure 9



Figure 10



Figure 11

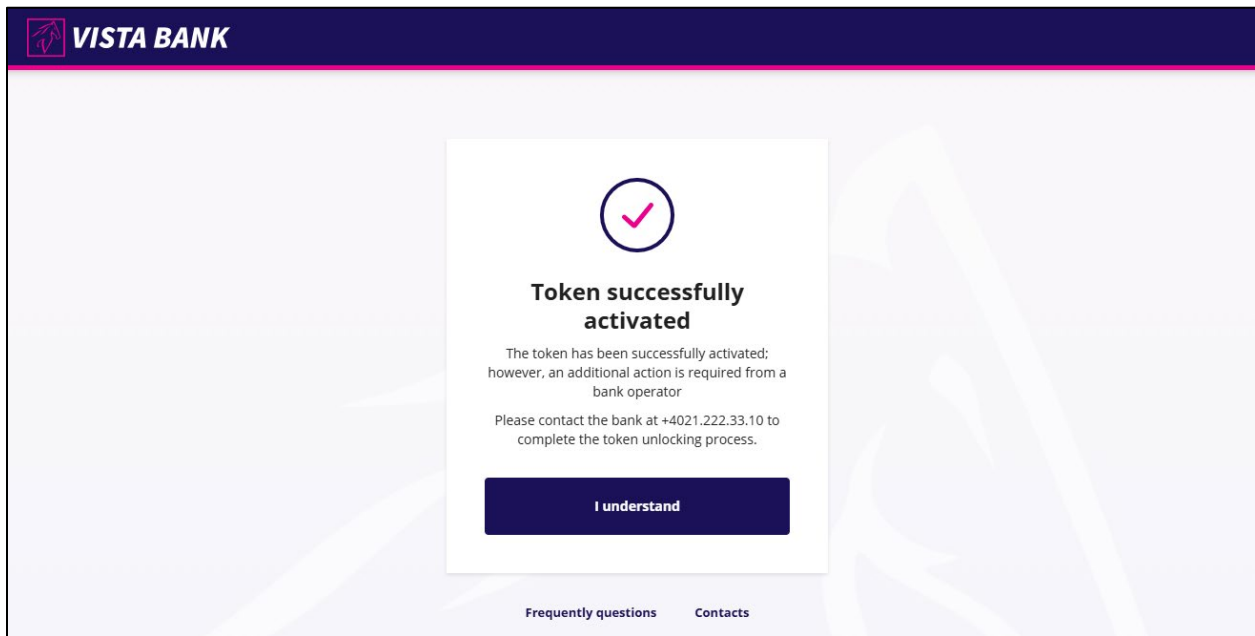


Figure 15

4. Authentication in Internet Banking using a hardware token

Enter your access credentials and click “Continue.”

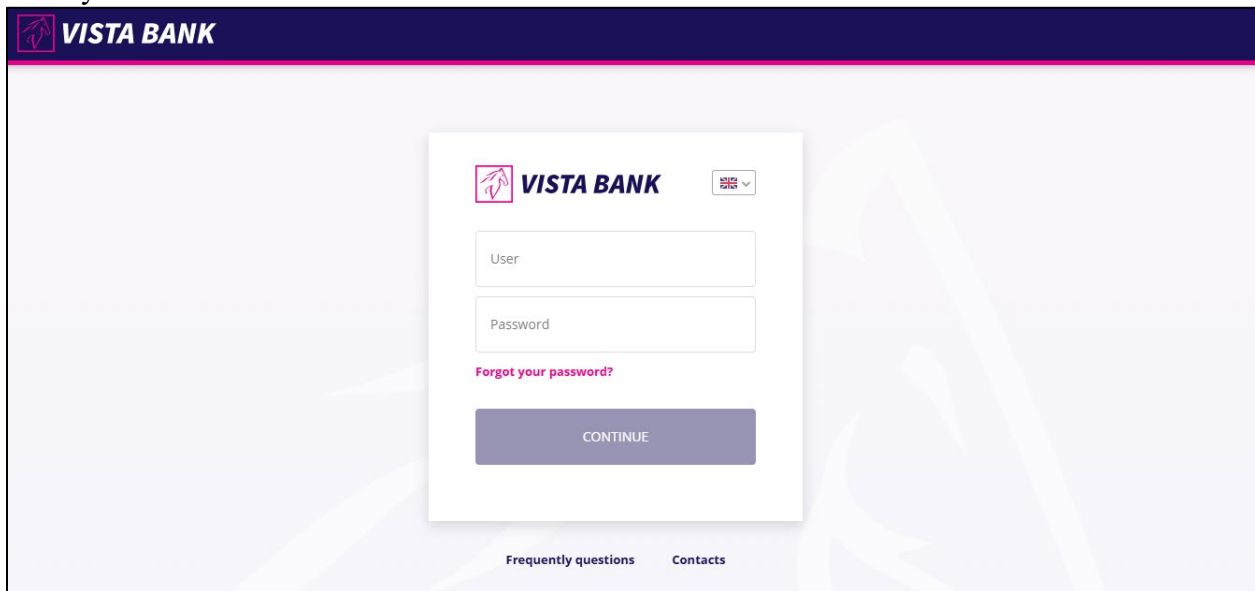


Figure 16

A pop-up will appear on the screen requesting you to sign in using the FIDO2 token, identified by its serial number.

Review the details and click “Connect.” A message confirming the token’s connection to Internet Banking will appear on the screen again.

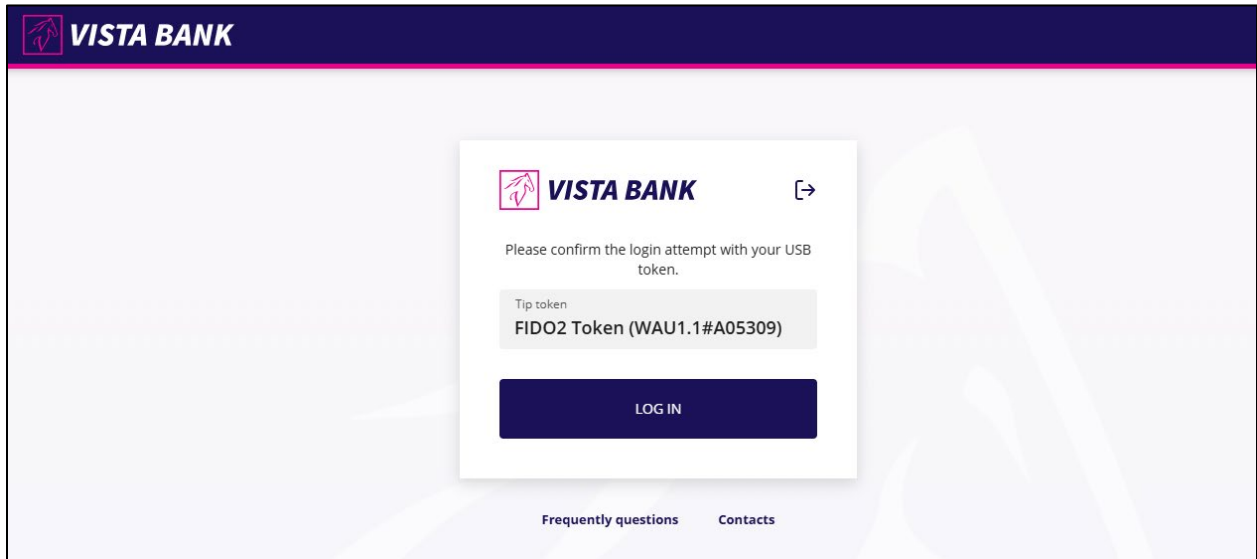


Figure 17

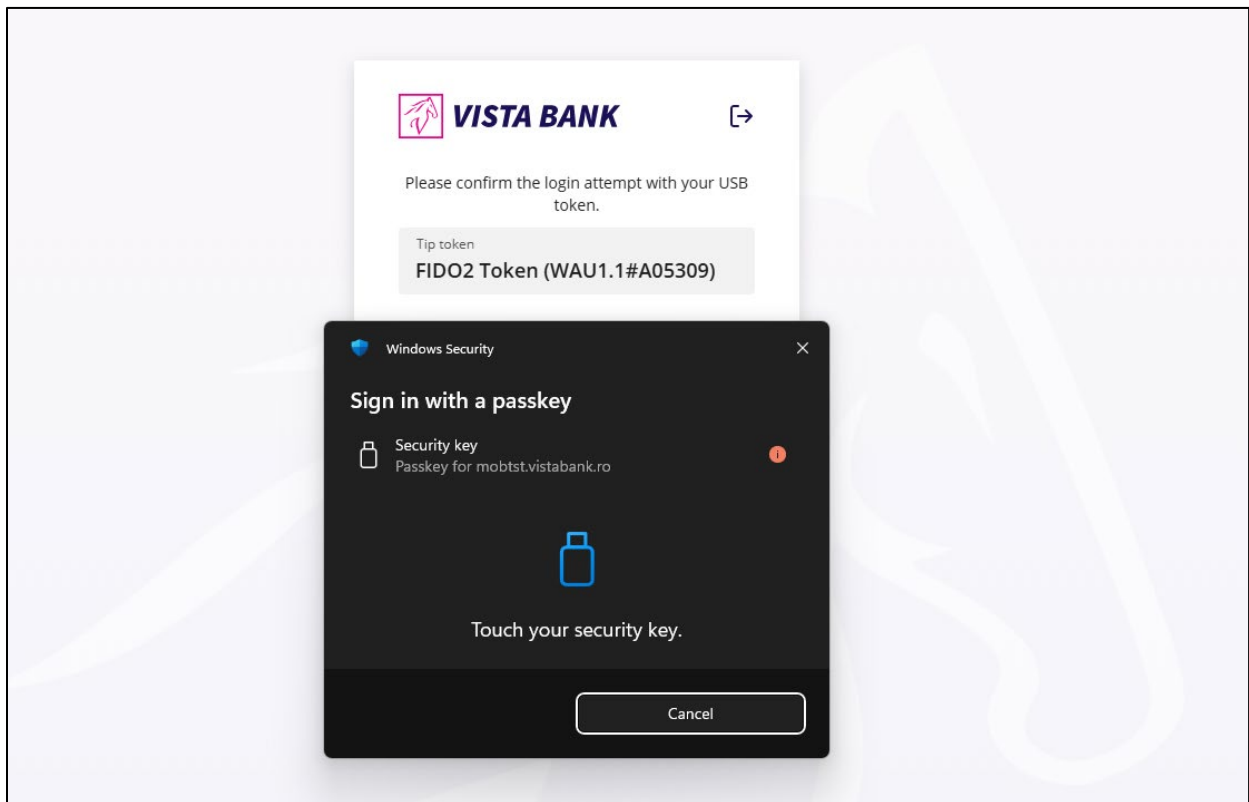


Figure 18

To move from one step to another on the token, use the “OK” button located in the bottom-right corner *Figure 19*, *Figure 20* and *Figure 21*. After entering the correct PIN code, you will be logged in.



Figure 19



Figure 20



Figure 21

5. Authorizing a payment with Hardware Token

When connecting the hardware token, the message shown in *Figure 22* will appear. It will then automatically change to the text shown in *Figure 23*.



Figure 22



Figure 23

After confirming the payment, click the “Continue” button. The following message will then appear on the right side of the screen:

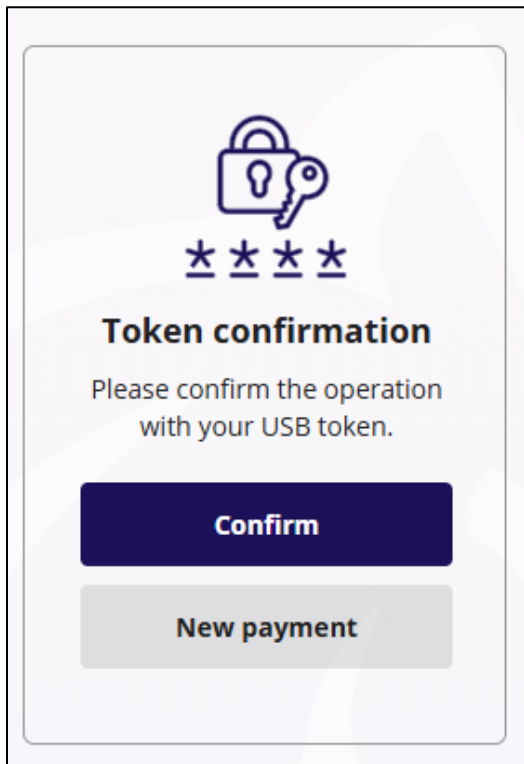


Figure 24

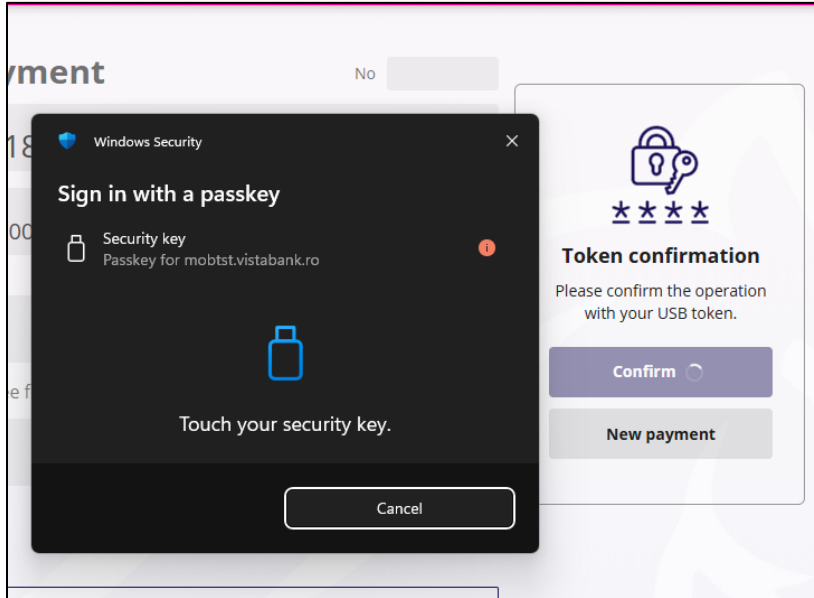


Figure 25



Figure 26

The token displays information about the beneficiary's IBAN [Figure 27](#) and the payment amount [Figure 28](#). If these match the details shown on the token each time, press "OK."



Figure 27



Figure 28

In the next step, you will be prompted to enter the PIN code *Figure 28*. After entering the PIN, a confirmation message will appear *Figure 29*.



Figure 29



Figure 30

6. Hardware Token configuration menu overview

The token menu contains five actions.
The first is language selection: Romanian or English.



Figure 31

The second option allows you to change the PIN code.



Figure 32

The third option allows you to view details and delete the account (after entering the PIN code).



Figure 33

The fourth option allows you to view the token version.



Figure 34

The fifth option allows you to reset the token.



Figure 34